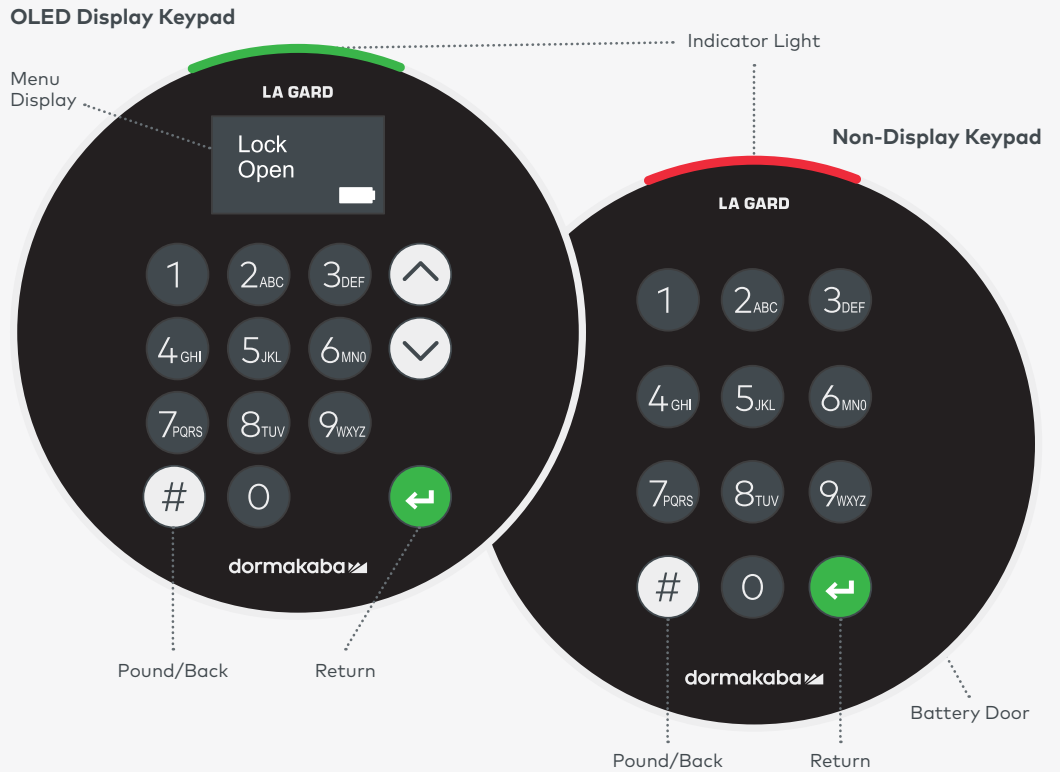


LA GARD 700 SERIES QUICK START GUIDE SERVICEABLE KEYPAD



Part #:705358 RevD | 7042.2.0623

Drill-Deburr-Tap Template/Plantilla de Taladrar-Debastar-Roscar/ Bohrschablone/Gabarit de perçage/Gabarito de Perfuração

Installation Best Practice/Instalación Mejores Prácticas/Einbau Beste Übung/Installation Meilleure Pratique/Instalação Melhor Prática

A & B: Physically mount the keypad. (Steps 1-4)
Note: Do not install batteries or connect to power.

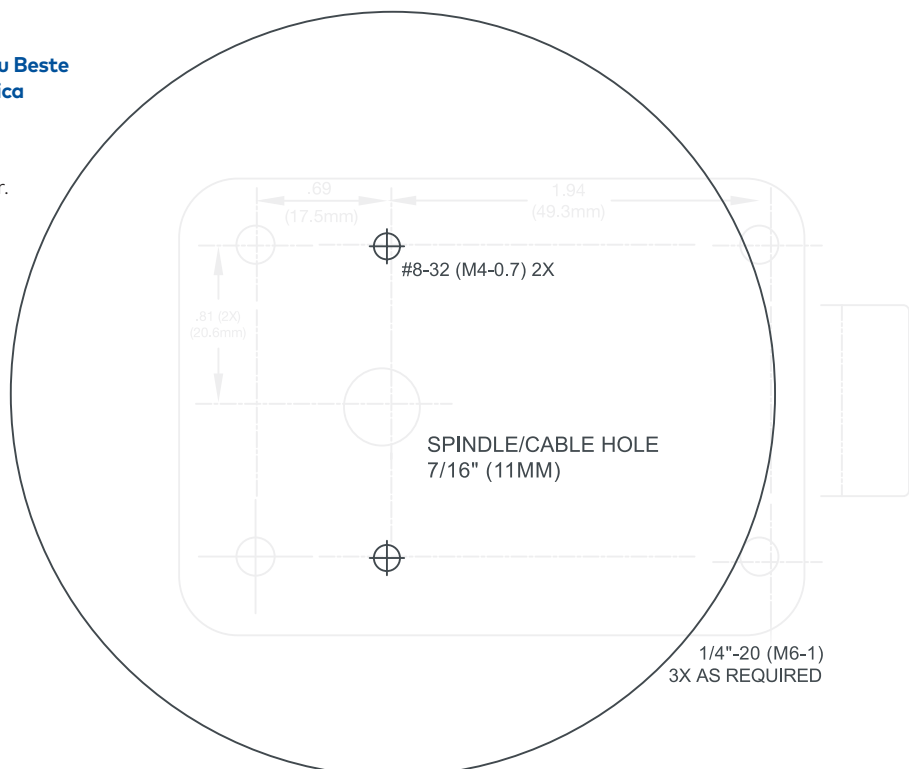
C: Physically mount the lock body. (Step 5)
Connect the keypad cable to the lock. (Step 6)
Note: Do not pull or over stretch the keypad cable as it may be pulled out of the internal connection port.

Install batteries or connect power. (Step 7)

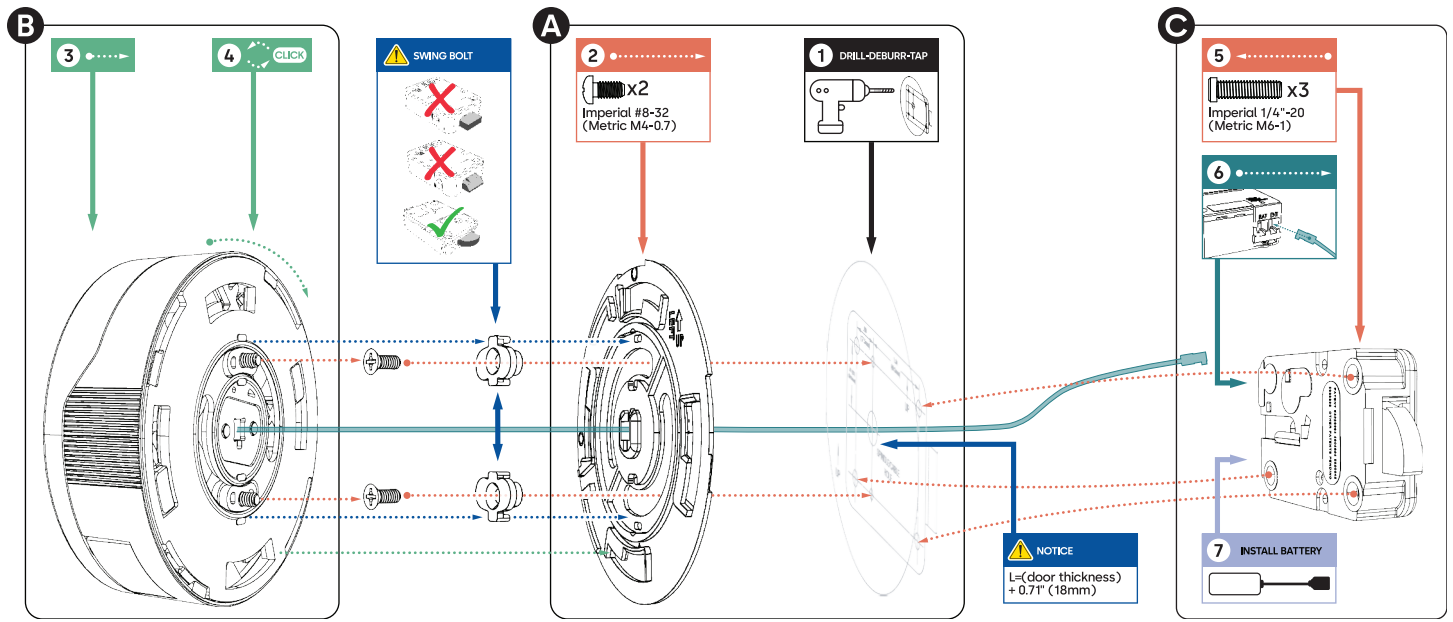
Please Note: If programming lock and then shipping to site, disconnect power and do not reapply/insert battery power until all systems are mounted and properly plugged in. If keypad does not immediately respond, please allow 30 to 45 seconds for entry to properly pair with lock body.

Set Up: Open the Container and Follow these quick set up instructions to program your system:

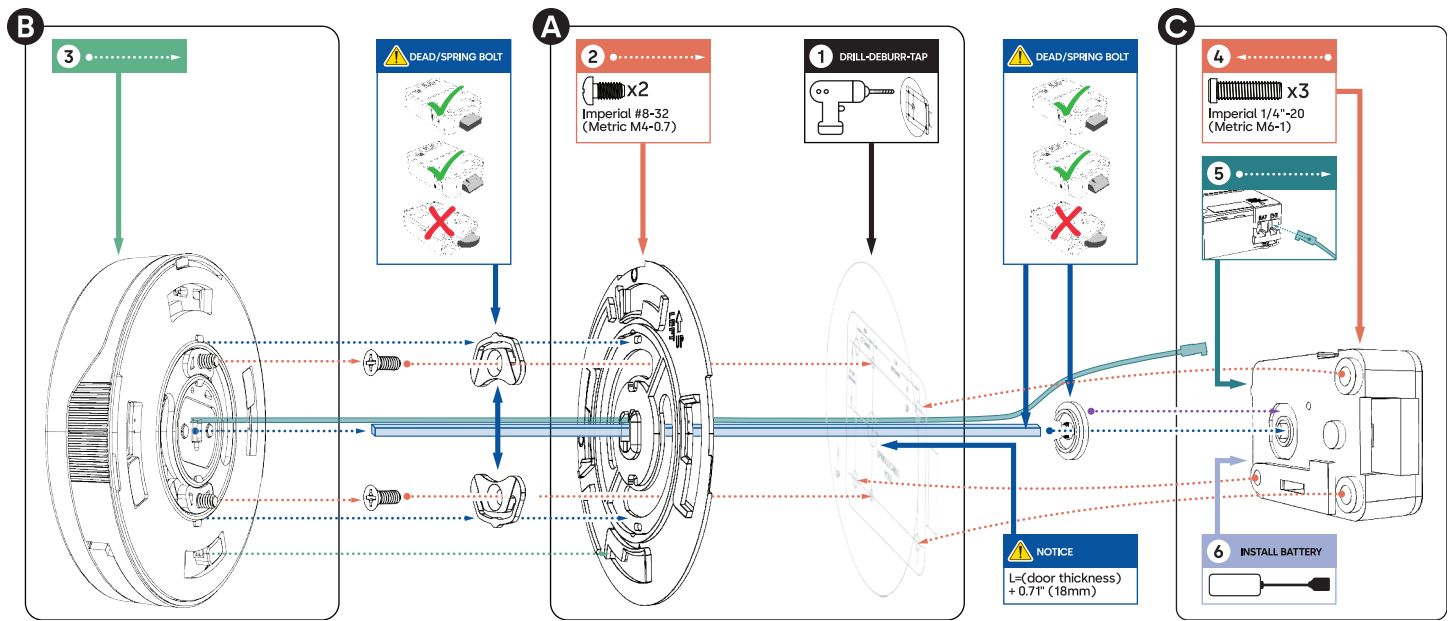
- 1 Manager Open and Audit Access
- 1 Standard Open and Audit Access
- Master/Super Master set for use



**Serviceable Swing Bolt Installation/Instalación/
Installation/Installation/Instalação**



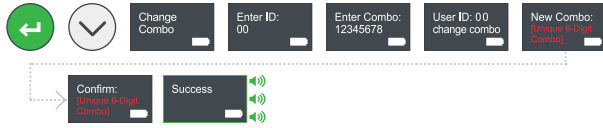
**Serviceable Dead & Spring Bolt Installation/Instalación/
Installation/Installation/Instalação**



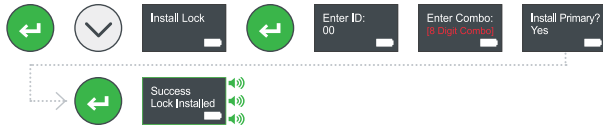
MODELS 701-705 OLED DISPLAY KEYPAD/TECLADO CON PANTALLA OLED/OLED ANZEIGE MIT TASTATUR/ÉCRAN OLED AVEC CLAVIER/TELA OLED COM TECLADO

NOTE: PRE-CONFIGURED LOCKS WILL UNLOCK BY SELECTING "OPEN LOCK" IN THE MENU THEN 1.

1 Change Master Combo/Cambiar Combinación Maestra/ Masterkombination Ändern/Changer la Combinaison Principale/Alterar Combinação Mestre



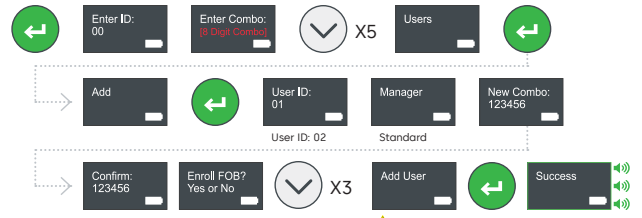
2 Install Lock/Instalar la Cerradura/Schloss Installieren/ Installer la Serrure/Instalar Fechadura



LEGEND:

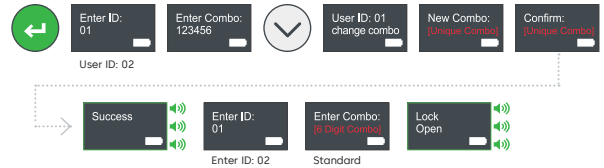
- = Correct/Correcto/Richtig/Correct/Correto
- = Incorrect/Incorrecto/Falsch/Incorrect/Incorreto
- = High Beep/Bip Alto/Hohes Akustisches Signal/Signal Acoustique Elevé/Bip Alto
- = Low Buzz/Ruido Bajo/Tiefes Akustisches Signal/Signal Acoustique Faible/Zumbido Baixo

3 Add User/Agregar Usuario/Benutzer Hinzufügen/Ajouter un Utilisateur/Adicionar Usuário



Repeat to Add User ID: 02

4 Open & Change Combo/Abrir y Cambiar Combo/Öffnen & Kombination Ändern/Ouvrir et Changer de Combo/Abrir e Alterar Combinação



Repeat to Add User ID: 02

Pro Tip: Open Command (Without Menu): [ID] + [6 Digit Combo] + =

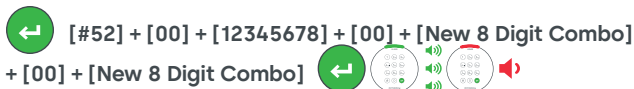
MODELS 701-705 NON-DISPLAY KEYPAD/TECLADO SIN PANTALLA/NICHT ANZEIGE TASTENFELD/CLAVIER SANS AFFICHAGE/TECLADO SEM TELA

NOTE: PRE-CONFIGURED LOCKS WILL UNLOCK BY PRESSING ANY KEY FOLLOWED BY 1

1 Add Pre-Configured User [01]/Agregar Usuario Preconfigurado [01]/Vorkonfigurierten Benutzer Hinzufügen [01]/Ajouter un Utilisateur Préconfiguré [01]/Adicionar Usuário Pré-Configurado [01]



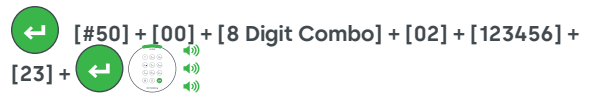
2 Change Master Combination/Cambiar Combinación Maestra/ Masterkombination Ändern/Changer la Combinaison Principale/Alterar Combinação Mestre



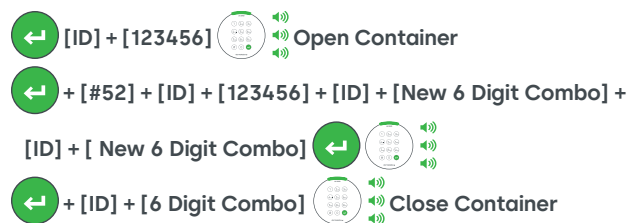
3 Install/Instalar Bloqueo/Schloss Installieren/ Installer le Verrou/Instalar Bloqueo



4 Add Standard User [02]/Agregar Usuario Estándar [02]/ Standardbenutzer Hinzufügen [02]/Ajouter un Utilisateur Standard [02]/Adicionar Usuário Padrão [02]



5 Change Combination & Open Lock/Cambiar Combinación y Abrir la Cerradura/Code Ändern und Schloss Öffnen/Changer de Code et Ouvrir la Serrure/Alterar Senha e Abra a Fechadura



700 BASIC: NON-DISPLAY KEYPAD/TECLADO SIN PANTALLA/NICHT-ANZEIGE TASTENFELD/CLAVIER SANS AFFICHAGE/TECLADO SEM TELA

1 MANAGER/1 USER/SUPER MASTER RESET CODE
NOTE: DEFAULT COMBINATION IS 123456

1 Set Super Master Reset Code (Optional)/Establecer Código de Reinicio Súper Maestro (Opcional)/Setzen Super Meister Zurücksetzen Code (Fakultativ)/Définir Le Code de Réinitialisation Super Maître (Facultatif)/Definir Código de Redefinição do Super Mestre (Opcional)

[0] Hold 3 seconds  [55555555] Hold last digit 3 seconds

   [0]  [Unique 8 Digit Combo]

 Re-Enter [Unique 8 Digit Combo] 

2 Change Manager Combination (Recommended)/Cambiar Combinación Gerente (Recomendado)/Masterkombination Ändern (Empfohlen)/Changer la Combinaison Gérant (Recommandé)/Alterar Combinação Gerente (Recomendado)

[000000]  [123456]  [Unique 6 Digit Combo]

 [Unique 6 Digit Combo] 

3 Add User (Optional)/Agregar Usuario (Opcional)/Benutzer Hinzufügen (Fakultativ)/Ajouter un Utilisateur (Facultatif)/Adicionar Usuário (Opcional)

[Manager Code] Hold last digit for 3 seconds  

[1]  [User 6 Digit Combo]  [User 6 Digit Combo]



4 Open Lock/Abir la Cerradura/Schloss Öffnen/Ouvrir la Serrure/Abra a Fechadura

Enter Active Combo  Open within 4 seconds 

Instructions/Instrucciones/Anweisungen/Instruções

For detailed Operation and Installation instruction go to:
www.dormakaba.us

